

FIREMASTER



**LPCB and FM-approved
non-combustible
internal composite wall
panel and ceiling systems**

Introduction

Eurobond is the UK's leading designer and manufacturer of insurer-friendly, non-combustible composite panel systems. The quality, technology and performance of the panels deliver a low-risk building solution for a wide range of applications.



Firemaster Panel System

The Firemaster Panel System comprises of three types of wall panel and a ceiling panel. The non-combustible panels offer the style, performance and versatility demanded by today's passive fire protection industry.

Product benefits

A panel type to suit each application

Flexible sizing Panel lengths up to 12m and panel widths of 1150mm

Fire rated Fire Resistance of up to 4 hours with a high-performance, easy-to-install interlocking joint

Application Walk-on ceiling panel to BS6399 (subject to manufacturer's guidance)

Compatibility The Firemaster System is fully compatible across all Eurobond products

Innovative The Firemaster panel system incorporates an innovative A2 fire resistant adhesive system ensuring ultimate fire performance due its low calorific value

After sales service Comprehensive design and specification support followed by full after sales service



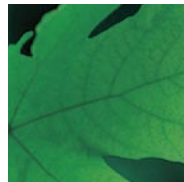
Non-combustible

All Eurobond composite wall panels systems are manufactured with a proven non-combustible structural Rockwool core.



Low smoke risk

Smoke not only causes damage to health, but can also cause major stock losses. Eurobond's Rockwool core is non-combustible and will therefore cause little or no smoke damage.



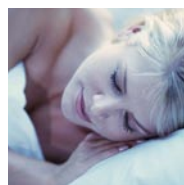
Environmentally sustainable

Eurobond cores are zero ODP and free of HCFC, CFC and greenhouse gases. At the end of its useful life the insulation can be reprocessed into further energy saving insulation.



Thermally efficient

All Eurobond products and the relevant standard details have been thermally modelled, using the BRE approved finite element software package, Trisco.



Acoustically sound

Eurobond's range of composite wall panels offer acoustic solutions developed to make approved Document E (2003) sound easier.



Subject to the conditions of Approval as a Class 1 metal faced wall panel with non-combustible core when installed as described in the current edition of the Factory Mutual Research Approval Guide



Certificate No545a/01/02/03/11 LPS 1208
Certificate No545c/01/02/03 LPS 1181



Assessed to ISO 9001:2000
Certificate number 545

Firemaster Panel System

The Firemaster panel system has been developed with durability, structural and fire performance in mind. The panel is ideally suitable for the construction of non-loadbearing internal partition walls that require a tested fire resistance in order to perform as firewalls or compartmentation walls.





For over 25 years Eurobond has been at the forefront of composite panel and door design with continuing major investments in new machinery and the testing of products to both Loss Prevention Certification Board (LPCB) and Factory Mutual (FM) standards.

As a result of these investments, Eurobond can offer a complete fire resistant building solution with Rockwool-cored composite panels and doors which are accepted by insurers world-wide.

Eurobond manufactures under the stringent control of the ISO 9001:2000 quality system.

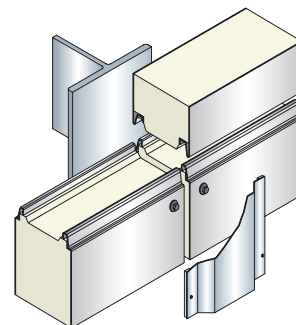
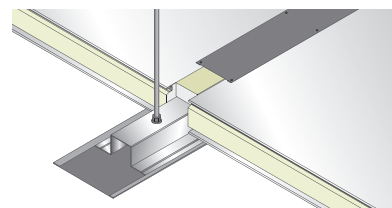
The Loss Prevention Council, Factory Mutual, Warrington Fire Research and Swinden Laboratories have subjected a range of panel types to rigorous, independent fire and structural performance testing which ensures that the Firemaster panel system will perform to the highest standards.

- **Firemaster Wall Lite** gives the optimum balance between fire performance, cost and weight. Designed specifically as a more practical, contractor-friendly solution. Firemaster Wall Lite is easy to handle and install. The ideal choice when fire resistance is required in an internal lining, wall or partition.
- **Firemaster Wall Extra** is the product of extensive research and development and is a class leading fire-rated wall panel designed for internal use. Firemaster Wall Extra has been developed with durability, structural and fire performance in mind and has been thoroughly tested and is proven in a wide range of structural and fire applications.
- **Firemaster Wall Ultima** is the result of an extensive long term design project between Eurobond and Rockwool. Firemaster Wall Ultima has been developed to provide compartmentation for high risk areas where up to 4 hours fire resistance (integrity & insulation) are required to ensure life safety and business continuity.

- **Firemaster Ceiling** is a class leading fire-rated ceiling panel suitable for both walk-on and non-walk-on use. Firemaster Ceiling has tested fire and structural performance and has demonstrated its suitability in a wide range of applications and is fully compatible with Firemaster wall panels.

All Firemaster Panels have an interlocking male/female joint design that delivers:

- Easier installation
- Improved fire performance
- Superior shear connection



Technology and design delivers a panel system with performance, economy and flexibility

Firemaster Panel Specifications

By working with key partners, Rockwool, Corus and Sika, Eurobond can offer increased capacity and consistent high quality to help reduce the build programme and deliver the Firemaster panels you need, when you need them.

Our continuous production method ensures a consistent and accurate joint, allowing compatibility across all the panels in the Firemaster System. The interlocking joint encapsulates the core producing a completely hygienic surface.

The core material is high quality non-combustible Rockwool with a predominantly vertical fibre structure, which provides high shear, compression and tensile strengths.

Once the panels are installed on site the panel core is completely encased by the interlocking joint detail. The Firemaster Wall is compatible with all other panels in the Firemaster System and other products in the Eurobond range.

Product features

- **Fire resistance** – Superb fire performance offering up to 4 hours fire resistance. Rockwool core material classified as A1 non-combustible under the new Euroclass reaction to fire classification.
- **Insulation** – Rockwool has excellent structural, thermal and acoustic properties.
- **Biological** – Rockwool is completely rot proof and does not encourage the growth of mould or bacteria.
- **Environment** – No CFC's or HCFC's used in manufacture and it is fully recyclable.

- **Water resistance** – Rockwool mineral wool repels water. The vapour resistance is negligible and usually considered to be the same as that of air.

Steel facing options

- Foodsafe laminate
- Assure antibacterial coating
- Primer coated galvanised
- White/grey polyester

Finish options

- Flat
- Mini Bead

Firemaster technical manual

The most recent detailed technical specifications and LPCB approved drawings are available on our website. Click on www.eurobond.co.uk or contact us for a copy of the Firemaster Technical Manual.

Physical Properties

Panel thickness (mm)	Acoustic properties weighted SR 1 (db)				U values (W/m²K)				Panel weight (kg/m²)			
75	27.2	29.2	–	29.2	0.46	0.49	–	0.49	15.76	18.46	–	20.13
100	28.5	30.2	–	30.2	0.35	0.38	–	0.38	18.24	21.84	–	23.51
125	29.0	30.9	–	30.9	0.29	0.31	–	0.31	20.71	25.21	–	26.88
150	30.1	31.8	31.8	31.8	0.24	0.26	0.26	0.26	23.19	28.59	31.9	30.26
	FIREMASTER WALL LITE	FIREMASTER WALL EXTRA	FIREMASTER WALL ULTIMA	FIREMASTER CEILING	FIREMASTER WALL LITE	FIREMASTER WALL EXTRA	FIREMASTER WALL ULTIMA	FIREMASTER CEILING	FIREMASTER WALL LITE	FIREMASTER WALL EXTRA	FIREMASTER WALL ULTIMA	FIREMASTER CEILING

Maximum allowable spans (m) for internal walls and ceilings

Panel thickness (mm)	Firemaster Wall Lite	Firemaster Wall Extra	Firemaster Wall Ultima	Firemaster Ceiling
75	6.6	8.2	–	5.5
100	7.7	9.4	–	6.1
125	8.6	10.5	–	7.0
150	9.4	11.5	11.5	7.6

Wall panel calculations are based on a uniformly distributed load of 0.25 KN/m².

Celing panel calculations are based on BS6399 using a uniformly distributed load of 0.25 KN/m² plus a point load of 0.9 KN.

Please note the above spans are based on the cold state structural performance of the panels. Where fire resistance is required the allowable spans may need to be reduced to ensure the fire resistance is maintained. Please refer to the Firemaster Technical Manual for additional guidance.

Sizes available (mm)		Tolerances (mm)
Length	2000 – 12000	+/- 10
Width	600 – 1150	+/- 2
Thickness	75 – 150	+/- 1

LPCB and FM approval

Firemaster panels have been tested and approved by the Loss Prevention Certification Board (LPCB) to LPS1181 Part 2 and LPS1208 and by Factory Mutual (FM) to FMRC standard 4880 “Class 1 fire classification of metal faced insulated wall panels with non-combustible core for installation with no height restriction”.

For over 150 years the Loss Prevention Certification Board (LPCB) and its predecessor the Fire Offices’ Committee (FOC) have been working with specifiers to set the standards necessary to ensure that a product is fit for purpose.

Approval of products is usually based on testing undertaken at LPCB’s world-renowned testing laboratories. In addition LPCB carry out rigorous checks of production processing and installation and maintenance requirements as necessary.

Once LPCB are satisfied that a product, service or company meets the necessary standards, a certificate is issued and the company is listed in The List of Approved Fire and Security Products and Services or The List of Approved Companies and Construction Products, available free of charge to specifiers and other users online at www.redbooklive.com.

For more information email sales@eurobond.co.uk or call us on 029 2077 6677

Clients include:

- Asda

- Big Yellow

- BMW

- Cadbury

- Department of Health

- Harlequins RFC

- Ikea

- J Sainsburys

- Levi Strauss

- L'Oreal

- Manchester Utd FC

- McDonalds

- News International

- Oxford University

- Peugeot

- RNLI

- Tesco

eurobond
delivering low risk building solutions

Eurobond Laminates Ltd

Wentloog Corporate Park

Cardiff CF3 2ER

Telephone: 02920 77 66 77

Fax: 02920 36 91 61

Email: sales@eurobond.co.uk

www.eurobond.co.uk

Ref: SB/FM/01

In association with our strategic trading partners
Corus, Rockwool and Sika



ROCKWOOL[®]
FIRESAFE INSULATION

